



Find Your Future

Pride

Respect

Success

The Year Ahead

2025-26
Year 7 Edition

Key information for
parents/carers and
students about
returning to school



Year 7



The Year Ahead

Dan Round

Assistant Headteacher

As we approach the start of the next academic year, we wanted to share some key information with our school community. This document contains important information for parents/carers as well as students about the return to school process. We would encourage all members of our community to read the information contained carefully to get ready for an exciting year ahead at Penrice Academy.

There are year group specific versions.

We hope that all our students had a great summer holiday and are looking forward to their return. There are lots of fantastic opportunities for our students to look out for in the year ahead.

Our 'The Year Ahead' publication contains all the following:

- Key Dates
- The First Day Back Arrangements
- 24/25 Tutor Groups
- Uniform Reminders
- Equipment Reminders
- Communication with Parents/Carers
- Penrice Plus Sign-up
- Attendance Reminders
- Support and Screening
- Policy Updates
- Ready for September Checklist
- GCSE Results News - Exceptional Achievements

There will be more information about the upcoming term as we go through the first couple of weeks. This will have lots of information about what your child will learn and all the things they have to look forward to, so keep an eye out for it in the coming weeks.

Key Dates 25/26 - Autumn Term

Start of the Year

Term begins for Years 7 & 11

Thursday 4th September 2025

**Term begins for Years 8, 9 & 10
(All Students in School)**

Friday 5th September 2025

INSET Days

CELT Schools, including Penrice, will be closed to students for INSET on the following dates:

- Monday 1st September
- Tuesday 2nd September
- Wednesday 3rd September
- Friday 17th October

Autumn Term Dates 2025-26

Autumn Term 2025:

1. Monday 1st – Wednesday 3rd September 2025 – Staff Inset Days (Students not required to attend)
2. Thursday 4th September 2025 – Term Begins for Year 7 and Year 11
3. Friday 5th September 2025 – All year groups to attend.
4. Thursday 16th October 2025 – Half Term Begins at 3:00pm.
5. Friday 17th October 2025 – Staff Inset Day (Students not required to attend)
6. Friday 17th October 2025 – Sunday 2nd November 2025 – Half Term
7. Friday 19th December 2025 – End of Term (Last day before Christmas Holidays)

SUCCESSFUL 7s



Adam Hayward
Assistant Headteacher

Supporting our Year 7s to have a successful start at Penrice

The transition from primary school to secondary school is an important time and can bring with it feelings of excitement but also anxiety as students, and parents, move from a familiar setting to one that is unfamiliar. There are many measures put in place throughout the transition process to support all students such as helping them with getting to know the physical school building, meeting new classmates and teachers, and learning the school routines.

Escorting to Lessons - First Timetable Cycle

At the start of each lesson, Year 7 students will assemble in their yard. Students will have letters on their timetables indicating which line they should join. They will then be supported in learning their way around the school site as they are taken to their lessons by their teachers. This means that every student will be escorted to every lesson and should feel confident in finding their way to their classrooms by the third week of term (23rd September).

Learning about our expectations

To support students in developing the positive, safe, learning culture we enjoy here at Penrice, we will begin the term for Year 7 students with a focus on praising students for displaying the positive behaviours we expect. Students will be recognised with merits, praise postcards and other rewards, all linked to our school values of pride, respect and success.

All students will be given a Successful 7s Challenge Card, with a variety of activities to complete during their first weeks, including: getting their first merit, signing up to a Penrice Plus activity, demonstrating positive learning habits and many more.

To support Year 7 students learning our behaviour policy they will not receive any negative behaviour points until Monday 15th September. From **Thursday 4th September until Friday 12th September**, instead of recording negative behaviour points, staff will take time to explain how and why certain behaviours may not meet our values and expectations and will explain the consequences that will be put in place if the same choices were made after Monday 16th September. It is important to note that this does not apply to any serious negative behaviour that puts the student, other students or staff at risk and prevents the calm, orderly culture of the school. If this were to occur, appropriate actions would be taken in line with normal school policy.

We are really excited to meet our new Year 7s on their first full day at Penrice, on the next page is some more information about that day.



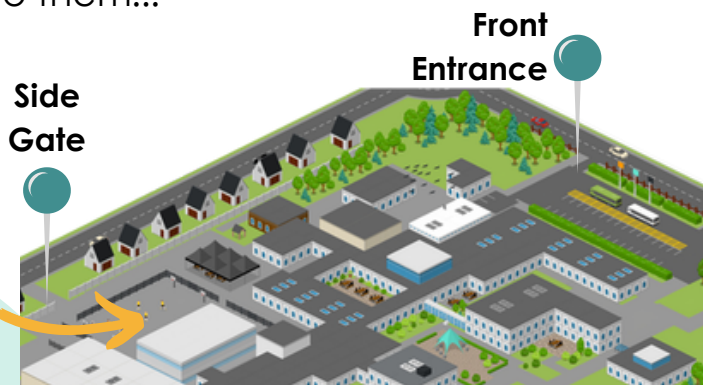
Year 7 - The First Day

Here are some common questions Year 7 Students have about their first day and the answers to them...

Where do I go when I arrive?

You will go to the Year 7 Yard. Student Leaders and teachers will then take you to your tutor room.

You can arrive through the front or side gate. Staff will show you the way.



What lessons will I have?

All students will receive their timetables with their lessons on during tutor time.

On their first two days, Year 7's will have a range of tutor and year group activities before normal lessons **start on Monday 8th September**

Do I need to bring my PE Kit?

No, you don't have PE on the first day. Student's timetables will detail when student's need to bring in their PE kits.

Where can I be picked up?

At the end of the day, **the front car park is closed** to allow all of the buses to wait. If you need to be picked up, **arrange to meet your parents somewhere away from the school site.**

Will I get any homework?

No, you won't receive any homework in your first week at Penrice. This will allow us time to get all students logged into their school accounts to access homework.

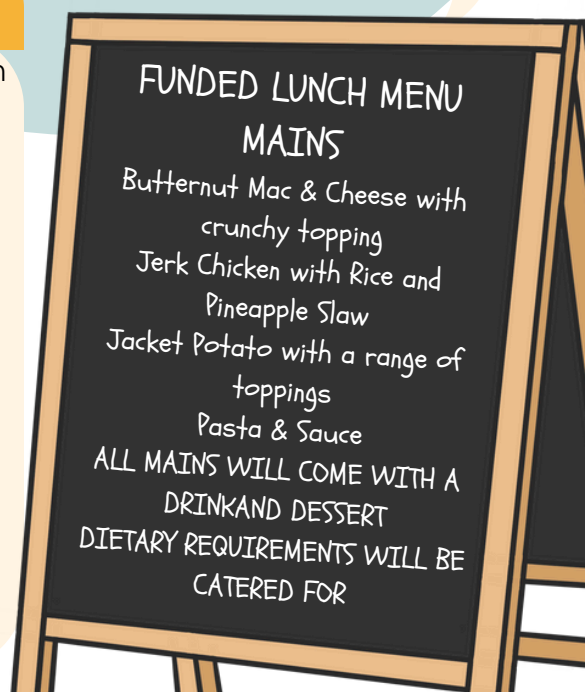
Funded Lunch on the First Day

Our catering partner will **provide a funded lunch** from the canteen to **every Year 7 student that wants one** on their first day at Penrice **on Thursday 4th September**. This is to give the Year 7s a chance to see what is available at the canteen and experience the process of using the canteen on their first day, with the support of Year 11.

Students will have several choices for their lunch. Dietary requirements known to us from the data capture will be catered for. As long as money has been added to their account online or using the cash machine in the canteen, Year 7 will be **able to purchase items** from the canteen **from their second day**.

Year 7 students won't be able to purchase items from the canteen on day 1, they should bring a drink and snack for morning break with them.

After Thursday, students will need to **have money on their Parent Pay** account to purchase food from the canteen



The First Day Back - 4th September

We are going to begin the new school year with two reconnection days on Thursday 4th and Friday 5th with normal lessons starting on Monday 8th September

Period	Activity
8:30 - 9:00 Tutor Time	<ul style="list-style-type: none"> Welcome from tutors Connection activities Logistics & information Transition activities
9:00 - 10:15 Period 1	
10:15 - 10:45	Break 1
10:45 - 12:00 Period 2	Extended Assembly
12:00 - 1:15 Period 3	Community lunch with Year 11 from 12:30
1:15 - 1:45	Break 2
1:45 - 3:00 Period 4	Connection activities

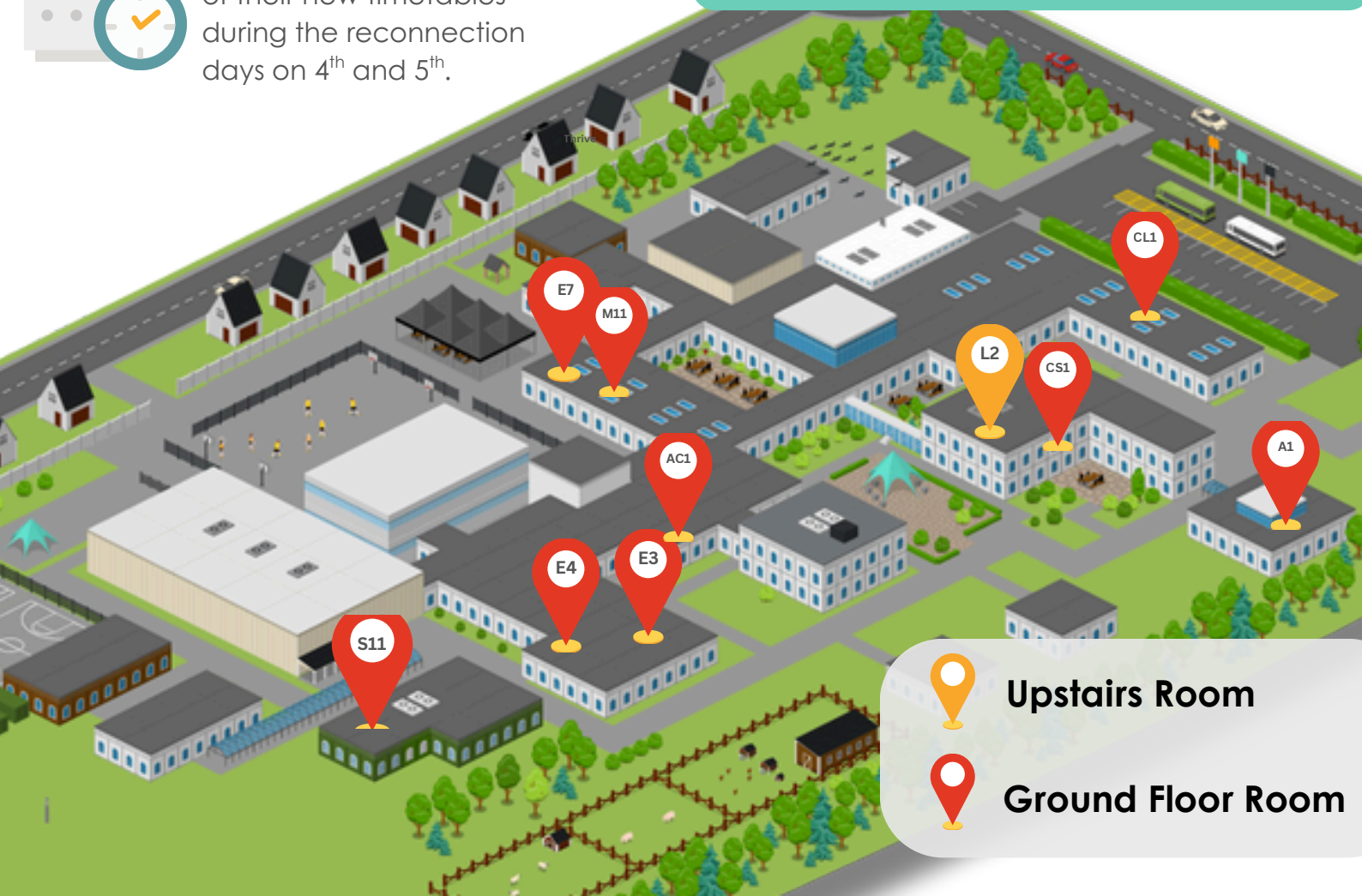
Year 7 Tutor Groups for 2025-26

Tutor Group	Tutor	Room
7AR	MS A Roberson aroberson@penrice.celtrust.org	E7
7JH	Mrs J Hole jhole@penrice.celtrust.org	M11
7CR	Mrs C Razzell crazzell@penrice.celtrust.org	E4
7SR	Mrs S Ricketts sricketts@penrice.celtrust.org	S11
7AS	Mrs A Stevens astevens@penrice.celtrust.org	CL1
7LE	Mrs L Elliot lelliot@penrice.celtrust.org	A1
7SE	Mr S Eliason seliason@penrice.celtrust.org	L2
7MM	Mr M Merelie mmerelie@penrice.celtrust.org	AC1
7SM	Mrs S Malcolm smalcolm@penrice.celtrust.org	E3
7OB	Mr O Brotherhood obrotherhood@penrice.celtrust.org	CS1

2025-26 Timetables

Students will receive copies of their new timetables during the reconnection days on 4th and 5th.

Where is our tutor room?



Uniform - We take pride in our appearance

Black Blazer with School Logo

(Compulsory Item)



Tailored White Long or Short Sleeve Shirt

Not Slim/Skinny Fit

(Compulsory Item)



Plain Black Formal Tailored Trousers

Not Slim/Skinny Fit

(Personal Choice Item)



Black and Gold School Tie

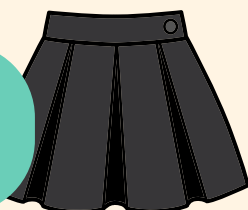
(Compulsory Item)

**Year 11 have a different tie*



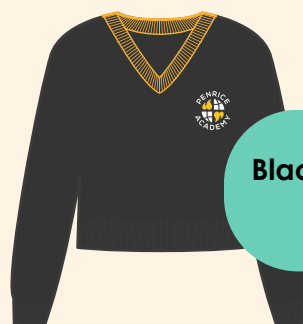
Plain Black Formal Knee-Length Pleated Skirt

(Personal Choice Item)



Black and Gold Jumper

(Optional Item)



Plain Black Formal Knee-Length Tailored Shorts

Not Slim/Skinny Fit

(Personal Choice Item)



Plain Black Sock

Not Ankle Socks

No Logos

(Compulsory Item)



Black Polishable Formal Shoes

Not Boots or Trainer Style

No Logos

(Compulsory Item)



The uniform policy has examples of shoes that are and are not acceptable

Jewellery

One watch can be worn, but nothing else on the wrist. No rings or bracelets. No necklaces. No charity bands unless agreed by the school. **Smart watches are not permitted.*

One pair of small and discreet, plain ear studs are permitted. They can be placed anywhere in the ear. The Academy does not allow any facial or tongue piercings including plastic retainers.

Make-up

Discreet make-up is permitted in the Academy and discretion is left with the Tutor, Head of Year and Leadership Team.

False eyelashes are not permitted. No coloured nail varnish allowed, nor are false or acrylic nails.

Additional Support

We do have allocated funding available to support families in hardship to purchase new uniform items. Please get in contact with Mrs Kirstin Hooper for further assistance: khooper@penrice.celtrust.org

Please Read the Full Uniform Policy on our Website





Pre-Loved

Sell • Swap • Save the Planet

Parents/carers can buy pre-owned uniform via Penrice Pre-Loved. Penrice Pre-Loved is all about giving old uniform and school equipment a new home, re-using perfectly good items and reducing carbon footprint together.

Penrice Pre-Loved is available in the following locations:

- Our in-school Uniform Store (in CS4).
- Online, via a Facebook Marketplace page.

The key difference between the Pre-Loved Uniform Store and the Facebook Marketplace page is that there will be no financial transactions in the Uniform Store.

The Uniform Store will only accept swapping items and donations/drop-offs*, whilst also providing free uniform support to those who need it.

**The Pre-Loved Uniform Store undoubtedly relies on the continued generosity of the Penrice community. Any donations will be gratefully accepted. Please ensure that uniform donations are cleaned and dry before drop off at the school gates.*



<https://www.facebook.com/groups/penriceprelovedmarketplace>



Proudly supported by the Penrice Green Team

Equipment - We come fully prepared to learn



School Bag - All students must bring a school bag.
There are no restrictions on colour or branding.
(Compulsory Item)

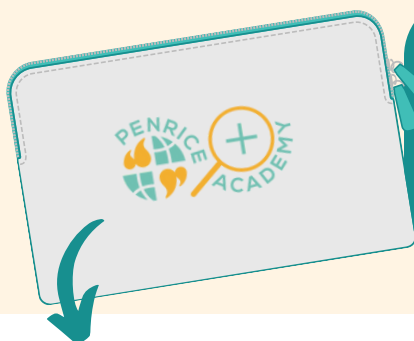
Pencil Case - Containing
Black Pens, Pencils, Ruler, Rubber, Pencil Sharpener and Highlighter(s)
(Compulsory Items)



A reading book
(you will be able to borrow this from the school library)
(Compulsory Item)



A refillable water bottle to use through the day
(there are water fountains around school to re-fill bottles)
(Compulsory Item)



Equipment Pack
All students will receive an equipment pack containing a whiteboard and pen on their first day.
(Compulsory Item)

Scientific Calculator
All students require a calculator, they can be purchased from the Penrice Shop
(Compulsory Item)



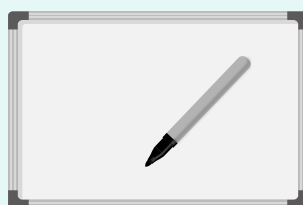
Recommended Model: Casio fx-83GTX

Penrice Equipment Packs

Every student is **provided with a free pack** of some extra equipment to support their learning at Penrice, in addition to what they are expected to bring themselves. They are expected to bring this pack to school everyday and look after it for the year. If it is damaged, graffitied or lost, a replacement will need to be purchased from our school shop.



A zip-wallet to keep all their equipment together.



A mini-whiteboard and pen which will be used in most lessons to check students' understanding of learning. Replacement pens will be provided if they run out.



Penrice Shop - Purchase equipment and revision guides directly at cost price from the school





#TeamPenrice

First PE Lesson

Please look at your timetables when you receive them in the first two days



In the Autumn term we focus on Rugby, Netball, Hockey and Strength and Conditioning. There are lots of exciting clubs, fixtures and activities planned as part of our PE offer.

Bringing PE kit is essential. Check out the list of kit below to make sure you are fully prepared.

All students must bring their PE kit even if they are unable to participate, as they will be expected to take a non-active role in the lesson. Non-participants should bring a note with a reason explaining non-participation.



Penrice Black/Gold Sports Top
Boys and Girls Versions Available
(Compulsory Item)



Penrice Black/Gold Rugby Shirt
Boys PE
(Compulsory Item)



Penrice 1/4 Zip Outdoor Top
(Optional Item)



Penrice Black/Gold Sports Shorts

Our Penrice PE shorts in gold and black are recommended, however generic plain black shorts are also acceptable.



Penrice Black/Gold Sports Skort

Black and gold sports skorts can be worn by girls during PE. Alternatively, girls can wear plain black sports leggings. Wearing both options together is also acceptable.



Plain Black Sport Socks
(Compulsory Item)

Studded boots are required for outdoor rugby and football.

Sports trainers are required for indoor PE lessons, court-based lessons, PE lessons on the astroturf and summer athletics lessons on the field.

Shin pads and gumshields are advised in Football, Hockey and Rugby.

Penrice ^{PLUS}

Find Your Extra

All our Penrice Plus Clubs are completely free for **all** students

FREE



ARTS

WELLBEING



ACADEMIC

SPORTS

Our autumn term Penrice Plus offer will be released shortly for sign up. We have an exciting term of activities planned, with something for everyone.

Further communication will be sent out with the activity brochure.

Once details of the Autumn Term 2025 activities are released the deadlines for sign up will be outlined.

For more information please contact Miss Cox: jcox@penrice.celtrust.org





Parental Communication

Y7

We have a number of mechanisms to communicate with parents and carers.

ClassCharts- Parent App



Parents can view their child's attendance, merits and behaviour points. Any detentions a child has will be recorded through Class Charts. Homework will also be set on Class Charts.



Parent Updates

Our parent updates share key information about the school. They are emailed out or shared via School Gateway.



School Gateway - Parent App

This is the platform we use to send communications to parents.



Year 7 Events

Parent Information Evening

In-person evening to help parents of new Year 7 students get started at Penrice.

Meet the Tutor Evening

Meet with your child's tutor to discuss their start at Penrice.

Progress Evening

Meet with your child's subject teachers to review their progress across the year, before they move into Year 8.



The Term Ahead

What will your child learn this term? What exciting opportunities are coming up? The term ahead has all the information.



Parent Forums

During the course of the academic year we will continue hold parent forums to allow us to work closely with parents to discuss and share ideas. Our first parent forum will focus on Year 7 Transition and will be on:

Thursday 7th November



Parents can email queries at any time to the relevant member of staff or penriceenquiries@penrice.celtrust.org

Follow us on
Social Media



SchoolSurveys

NEW

This year we are launching a new snapshot survey platform to take regular quick feedback on various aspects of the school from parents. They will only take a minute to complete.

Student Support

The Student and Family Centre (SFC)

The Student and Family Centre is part of our Pastoral Support at Penrice Academy. We recognise that for some students, school is not always an easy experience and they may need extra support from our caring staff within the SFC. If a student needs help with making the transition back to school they can always visit the SFC for some additional help. Please email Kirstin Hooper (Student Support Team Leader) khooper@penrice.celtrust.org



Are you ok?

If you are worried about something that affects you, or a friend, or your child please use our 'Are you ok?' online form to let our specialist team know.

penriceacademy.org/ok



Meet and Greet

Any student can grab something to eat in the morning before school!

Starts **from Monday 8th September**



We run our Meet and Greet every school morning as you enter through reception where students can collect a breakfast bar and piece of fruit to start the day.

There is no sign up - students can just turn up and grab something in the mornings.

Screening Tests

Claire Gurd
Deputy Headteacher



At Penrice, we value reading and recognise how reading is of paramount importance, enabling success in all aspects of education and life beyond school. To help support our programme of reading interventions and to enable our teachers to target reading support, we will be conducting screening tests of all our Year 7 students early in the academic year. These tests will allow us to produce an accurate reading age for your child. We will then identify if they require any additional support, to guarantee that every child leaves our school reading fluently and with accuracy. The screening tests will also help us to identify if your child may require additional SEND support or access arrangements for other assessments as they progress through the school.

The tests will take place during the first two weeks of the academic year, during lesson time. Students will be extracted from their lessons in groups to complete the online New Group Reading Tests (NGRT).

The screening test will be accessed using a computer and will last approximately 45 minutes. Please can you reassure your child about the screening and discuss with them the importance of completing the test to the best of their ability so we can calculate an accurate reading age.

If you have any questions about the screening tests, please get in touch.

Penrice Academy Safeguarding Team



Mrs A Macdonald
Assistant Headteacher and
Designated Safeguarding Lead (DSL)



Mrs K Slipper
Operational DSL



Ms H Gill
Deputy DSL



Mr J Scotland
Safeguarding Team



Mr K Hartland
Safeguarding Team



Mr O Brotherhood
Teacher of Children in Care



Mrs C Gurd
Deputy Headteacher



Mrs A Davey
Safeguarding Administrator



Mr P Bundy
Safeguarding Governor

USEFUL CONTACTS

Mrs A Macdonald
Designated Safeguarding Lead
Ext. 2407 | amacdonald@celtrust.org

Mrs K Slipper - Operational DSL
Ext. 2938

Ms H Gill - Deputy DSL
Ext. 2948

AGENCIES

Emergency Services: 999

Devon and Cornwall Police: 101

Cornwall Children's Social Care
Multi-Agency Referral Unit (MARU):
0300 1231 116

Childline: 0800 1111

Safeguarding Team Location

Our safeguarding team are located
in an office and work
space/meeting room.

We are based at the top of the stairs
in the language/maths block.



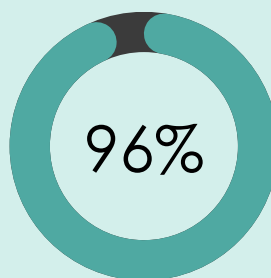
Attendance

At Penrice Academy we recognise the importance of regular and punctual school attendance. We routinely monitor attendance to ensure that all students understand the importance of attendance and feel supported to develop excellent attendance habits. We also love to celebrate excellent attendance through weekly merits, attendance raffles and during celebration assemblies just to name a few.

We do however understand that at times, students are unwell and absence is unavoidable. In this case, we ask that parents/carers contact the school with a reason for absence. In addition, we know that at times, some students struggle to attend school. At Penrice Academy, we pride ourselves on our pastoral care and we will do all we can to remove any barriers that students may have which stops them attending daily whilst ensuring they feel fully supported. If you feel we could do anything more to support your child, please contact the Academy.

To further encourage and support positive attendance, we will continue to conduct home visits to households where a student is absent for a period of time and we have received no contact from parents/carers to confirm a reason for their absence.

Should you have any questions or concerns regarding this, in the first instance please contact our Attendance Officer, blane@penrice.celtrust.org.



Students who attend school at least 96% of time achieve a grade higher (on average) in every subject they study for GCSE, compared to students with attendance below 90%

A recent study has shown that if a child is absent for one of the first days of the new term, for unauthorised reasons, they are much more likely to miss long periods of their schooling compared to their peers who attended those first days. These children had a predicted overall absence of almost 45%. This shows just how important it is that children are at school, ready to learn, in the first days of the September term. We will be holding a 'Day 1 Attendance Prize Draw' on each year groups first day. There will be a range of great prizes up for grabs. All students need to do to be eligible is be in on the first day! There will be more rewards to look forward to throughout the first few weeks back.

Lots of prizes to be won throughout the school year.

Policy Updates

Each year, Penrice conducts a review of all uniform, behaviour and expectations policies. We would encourage all parents to familiarise themselves with our updated policies for the 2024/25 Academic Year.



Penrice Uniform Policy
2025/26



Penrice Behaviour Policy
2025/26



**Celebration
Assembly
Attendance
Prizes**

SEND Support

At Penrice we welcome everyone into our community. Penrice endeavours to make available inclusive provision to ensure that all pupils, including those pupils identified with Special Educational Needs and Disabilities (SEND), can enjoy and benefit from a broad and balanced education with access to the National Curriculum at an appropriate level, so that they may achieve their full potential.

All children and young people are entitled to an education that enables them to make progress so that they:

- Achieve their best
- Become confident individuals living fulfilling lives
- Make a successful transition into adulthood, whether into employment, further or higher education or training.

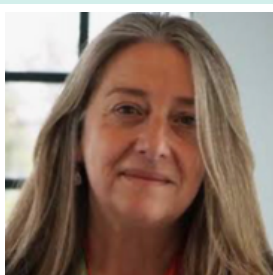
As a team, our aim is to manage the provision made for students with SEND and ensure the best support and interventions are put in place to enable students with SEND to make good progress whilst at Penrice Academy. Students with Special Educational Needs are given every opportunity to function successfully in both the learning and social environments of the school. We work together as a team and with the rest of the school to provide support and additional help for students where necessary.

We offer a range of strategies, programmes and activities to support students who may find aspects of learning more challenging. The views of parents and carers are very important to us and we are keen to continue to develop home school partnerships to support our young people with SEND at Penrice Academy. By working together we aim to make your child's experience of school a positive one, where they will flourish both pastorally and through exam success.

Alongside the in-class support we offer specialist centre support as follows;

- The Learning Pathways Centre is our Key Stage 3 SEND base. This centre offers targeted support for identified students, including bespoke lessons, EHCP interventions, literacy and numeracy support, 1:1 SEND support and supported social times.
- The Future Pathways Centre is our Key Stage 4 SEND base. This space provides tailored support, including alternative qualifications, bespoke lessons, overlearning opportunities for core subjects and a supportive base for students who may be finding it difficult to access a full timetable.

Key contacts:



Kirsty Taylor

Assistant Headteacher & SENDCO
ktaylor@penrice.celtrust.org



Sue Wakeling

Operational SENDCO
swakeling@penrice.celtrust.org

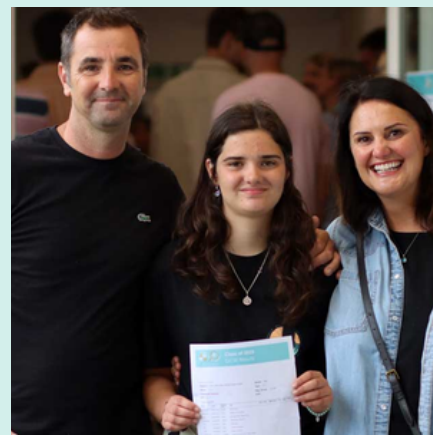
Exceptional Success for our Students in their GCSE Results

Among the many highlights of this year's results:

- Maths: 80% of students achieved a Grade 4 (Standard Pass) or higher. Over 25% of students achieved Grade 7 or higher.
- English: English matched the success of maths with 80% of students achieving a Grade 4 (Standard Pass) or higher and over 25% of students achieving Grade 7 or higher.
- Science: 86% of students achieved at least one Grade 4 in science (across combined and triple). 32% of students achieved at least one Grade 7 in science.
- PE Excellence: 46% of students achieved a Grade 7 or higher in PE, with an incredible 100% achieving at least a Grade 4. Sports Science students also impressed with an average grade of 6.
- Languages Growth: French saw remarkable growth, with the number of students achieving Grade 5 or higher doubling compared to last year.
- Creative Arts Achievement: In Drama, 57% of students achieved either a Level 2 Distinction or the top-level Distinction* grade – the two highest possible scores.
- Child Development: Excellent results with one student receiving a special commendation from the exam board for being one of the highest scoring students nationally.



Emily
Received a special commendation from the exam board



Lily
Hard work really does pay off!

“I did better than I thought I would. Securing a Grade 5 in English Language really surprised me – my teacher [Mrs Yeo] has been amazing. All of the teachers and staff have been absolutely incredible. A special shout out to Mrs Hatch who has also been extremely helpful.”

”

Hear about more
success stories!



September Ready Checklist



Uniform - Check that you have all the uniform you need



Equipment - Check that you have all the equipment you need



Penrice Plus - Complete the sign-up form ***when brochure is released***



Tutor Group - Know who your tutor is and where the tutor room is



Policies - Look at our updated policies



Contact Details - Email penriceenquiries@penrice.celtrust.org if any details have changed



Travel Arrangements - Make sure you know how to get to school on time and how to get home.

- **Morning** - The school is open to students from **8:00am**. Students should arrive no earlier than this and should be on site by **8:25am**.
- **Afternoon** - Parents should note that there is **no pick-up from the front of school** after school. Please arrange pick-ups away from the school site to allow buses access.