

Year 6 Transition Update

WHAT'S IN THIS UPDATE?

Introductory Words

#MyPenrice Transition Videos

Our Senior Leadership Team

Uniform Information

Primary Visits Schedule

Welcome Day Logistics

Upcoming After-School Sessions

Mandarin Update

Parent café for parents of students with ASC / ASD / ADHD

Pastoral Transition Surveys Reminder

Essential Enrolment Data Request

2026-27 Term Dates Summary

Dear Year 6 Parents and Carers,

It was fantastic to meet so many of you at our 'Welcome to Team Penrice' event at the end of April and we are truly grateful for the feedback you provided on this new event.

We hope that your child is enjoying breathing a sigh of relief after their recent SATs exams and that they can now start to feel really excited about the next chapter in their educational journey!

As we count down to our official Welcome Day on Tuesday 7th July, we have some important updates to share in this transition update.

MRS JESS HOLE - YEAR 6 TRANSITION LEAD



Who's who in our Senior Leadership Team

As mentioned at our Welcome to Team Penrice event – here are the names and contact details of our Senior Leadership Team.



MR RICHARD BAKER

Headteacher &
Deputy Trust Lead

rbaker@celtrust.org



MS TANYA COLEMAN

Deputy Headteacher –
Outcomes and Quality of
Education

tcoleman@penrice.celtrust.org



MRS CLAIRE GURD

Deputy Headteacher –
Teaching and Learning, and
Quality of Education

cgurd@penrice.celtrust.org



MR ADAM HAYWARD

Deputy Headteacher –
Attendance, Behaviour and
Culture

ahayward@penrice.celtrust.org



MRS KIRSTY TAYLOR

Assistant Headteacher -
SEND

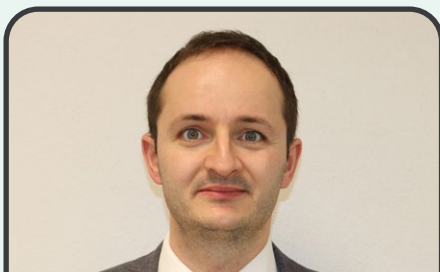
ktaylor@penrice.celtrust.org



MR JOHN DOHERTY

Assistant Headteacher -
Designated Safeguarding
Lead

jdoherthy@penrice.celtrust.org



MR BEN WRIGHT

Assistant Headteacher –
Raising Standards Lead

bwright@penrice.celtrust.org



MISS JENNI ODDY

Assistant Headteacher –
Teaching and Learning, and
CPD

joddy@penrice.celtrust.org



MRS LISA JOHNS

Assistant Headteacher –
Operations

ljohns@penrice.celtrust.org

Penrice On Tour - Primary Visits

Our fabulous Transition Lead (Mrs Jess Hole) and her team have started their tour of local primaries.

They will be meeting your child to settle nerves, answer questions and build excitement for Welcome Day.



Biscovey Academy

Thursday 23rd April



Pondhu

Tuesday 2nd June



Tywardreath

Tuesday 19th May



Carclaze

Tuesday 9th June



Bishop Bronescombe

Wednesday 20th May



Luxulyan

Tuesday 9th June



Charlestown

Thursday 21st May



Mevagissey

Wednesday 10th June



Mount Charles

Thursday 21st May



Sandy Hill

Thursday 11th June



Lanlivery

Tuesday 2nd June



St Mewan

Monday 15th June



After School Sessions



SAVE THE DATE

We are excited to share with you another new opportunity as part of our transition process this year – after school sessions for you and your child to have a taster of some of the activities / lessons your child can get involved in.

We are planning for these sessions to run 4:00pm-5:00pm on:
Tuesday 16th June
Thursday 25th June, and
Thursday 2nd July.

These sessions will include activities such as Penrice Kitchen, sport and PE, and science.

Full details of these and information on how to book your child's space will be shared after the half term break. For now, please save the dates!



Parent Café

Monday 22nd June, 2:30pm - 4:30pm

Parent café for parents of students with ASC / ASD / ADHD

This event is an informal opportunity for you as parents/carers to visit the school, meet the team and view our setting. You will get the chance to discuss any concerns that you may have ahead of your child starting in September.

The event will be supported by Katy Frampton from the County Autism Team as well as Sue Wakeling (Operational SENDCo at Penrice). We look forward to answering any questions you may have about provision and support.

For more information or to express your interest, please contact Mrs Wakeling. Operational SENDCo swakeling@penrice.celtrust.org.

We look forward to seeing you there!



Pride
Respect
Success

Essential Enrolment Data Request (Admissions +)

In the near future, you will receive a separate email from our Admissions + platform. This is the secure online system that we use to gather all necessary details for your child's enrolment. The process should take approximately 20-minutes to complete.

Why We Require This Data

Please complete this data capture process as soon as possible to ensure the smoothest transition for your child. This information is essential for helping us to keep your child safe – for example, by making us aware of any pre-existing allergies or medical conditions amongst many other things.

Contact Preferences

Whilst completing the form, you will have the opportunity to add additional contacts to your child's records – this will then enable more than one named individual in your family to receive school communications. However, please note that all contact details you provide on the form will only be effective from 3rd September 2026 when your child officially starts at Penrice. Until then, we will continue to contact families via the individual contact details provided by Cornwall Council.





#MyPenrice Transition Videos

We recently interviewed our Year 7s who answered frequently asked questions, sharing their experiences about starting at Penrice. Hear what they had to say in our #MyPenrice video series, made specially for incoming students.

The Questions

1. Were you nervous when starting? If so, what helped?
2. Will my friends be in my tutor group?
3. What happens on Welcome Day?
4. What does a normal school day look like?
5. What after school clubs are there?
6. What are lessons like at Penrice?

Click the videos below to play via:



#MyPenrice
No.1: Feeling Nervous



Pride
Respect
Success



#MyPenrice
No.4: The School Day



Pride
Respect
Success



#MyPenrice
No.2: Tutor Groups



Pride
Respect
Success



#MyPenrice
No.5: School Clubs



Pride
Respect
Success



#MyPenrice
No.3: Welcome Day



Pride
Respect
Success



#MyPenrice
No.6: The Classroom



Pride
Respect
Success



Uniform Information

We will be talking through all uniform requirements when parents/carers attend our Welcome Evening on Tuesday 7th July.

However, if you would like to get a head start, you can access our uniform information and policy via the link below. Information on where to buy is also contained on this web page.

[Uniform Information](#) 

Welcome Day Logistics

After half-term, we will be sending out further instructions about our Welcome Day on 7th July including timings, what to prepare and what to expect. There will also be an exciting opportunity for your child to pick in advance their Penrice Plus taster preference which will take place on the afternoon of the Welcome Day.

Mandarin Update

Thank you to all families who applied for our Mandarin Excellence Programme. All applications for our Mandarin Excellence Programme are currently being reviewed by our Modern Foreign Languages team who will be in contact shortly to inform families about the outcomes.

Pastoral Transition Surveys Reminder

Lastly, thank you to all families who have completed our Pastoral Transition Surveys sent out in March. These transition surveys will really help our Transition Team and Year 7 Tutors (when appointed) to really get to know your child before meeting them. In the event that you have not yet completed the Transition Surveys for your child, it's not too late! You can download our initial contact letter again below which contains links to the parent and student Pastoral Transition Surveys,



Initial Contact Letter

Download here (PDF: 189KB)

Penrice Academy and CELT Term Dates 2026-27



First Day of Year 7: Thursday 3rd September

September 2026							
Wk	Mo	Tu	We	Th	Fr	Sa	Su
36		1	2	3	4	5	6
37	7	8	9	10	11	12	13
38	14	15	16	17	18	19	20
39	21	22	23	24	25	26	27
40	28	29	30				

October 2026							
Wk	Mo	Tu	We	Th	Fr	Sa	Su
40				1	2	3	4
41	5	6	7	8	9	10	11
42	12	13	14	15	16	17	18
43	19	20	21	22	23	24	25
44	26	27	28	29	30	31	

November 2026							
Wk	Mo	Tu	We	Th	Fr	Sa	Su
44							1
45	2	3	4	5	6	7	8
46	9	10	11	12	13	14	15
47	16	17	18	19	20	21	22
48	23	24	25	26	27	28	29
49	30						

December 2026							
Wk	Mo	Tu	We	Th	Fr	Sa	Su
49		1	2	3	4	5	6
50	7	8	9	10	11	12	13
51	14	15	16	17	18	19	20
52	21	22	23	24	25	26	27
53	28	29	30	31			

January 2027							
Wk	Mo	Tu	We	Th	Fr	Sa	Su
53					1	2	3
1	4	5	6	7	8	9	10
2	11	12	13	14	15	16	17
3	18	19	20	21	22	23	24
4	25	26	27	28	29	30	31

February 2027							
Wk	Mo	Tu	We	Th	Fr	Sa	Su
5	1	2	3	4	5	6	7
6	8	9	10	11	12	13	14
7	15	16	17	18	19	20	21
8	22	23	24	25	26	27	28

March 2027							
Wk	Mo	Tu	We	Th	Fr	Sa	Su
9	1	2	3	4	5	6	7
10	8	9	10	11	12	13	14
11	15	16	17	18	19	20	21
12	22	23	24	25	26	27	28
13	29	30	31				

April 2027							
Wk	Mo	Tu	We	Th	Fr	Sa	Su
13				1	2	3	4
14	5	6	7	8	9	10	11
15	12	13	14	15	16	17	18
16	19	20	21	22	23	24	25
17	26	27	28	29	30		

May 2027							
Wk	Mo	Tu	We	Th	Fr	Sa	Su
17						1	2
18	3	4	5	6	7	8	9
19	10	11	12	13	14	15	16
20	17	18	19	20	21	22	23
21	24	25	26	27	28	29	30
22	31						

June 2027							
Wk	Mo	Tu	We	Th	Fr	Sa	Su
22		1	2	3	4	5	6
23	7	8	9	10	11	12	13
24	14	15	16	17	18	19	20
25	21	22	23	24	25	26	27
26	28	29	30				

July 2027							
Wk	Mo	Tu	We	Th	Fr	Sa	Su
26				1	2	3	4
27	5	6	7	8	9	10	11
28	12	13	14	15	16	17	18
29	19	20	21	22	23	24	25
30	26	27	28	29	30	31	

August 2027							
Wk	Mo	Tu	We	Th	Fr	Sa	Su
30							1
31	2	3	4	5	6	7	8
32	9	10	11	12	13	14	15
33	16	17	18	19	20	21	22
34	23	24	25	26	27	28	29
35	30	31					

 INSET Days (Staff Only)

 School Holidays